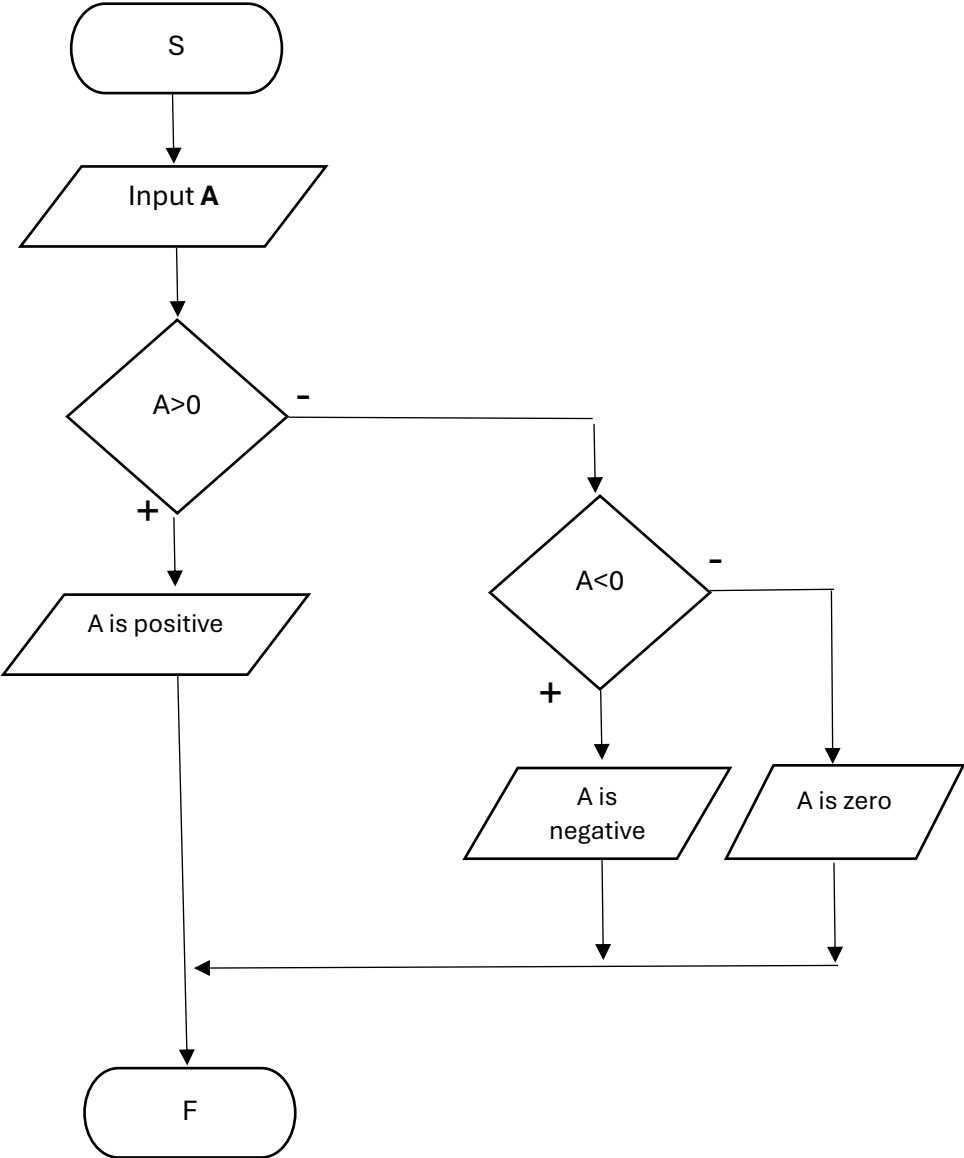
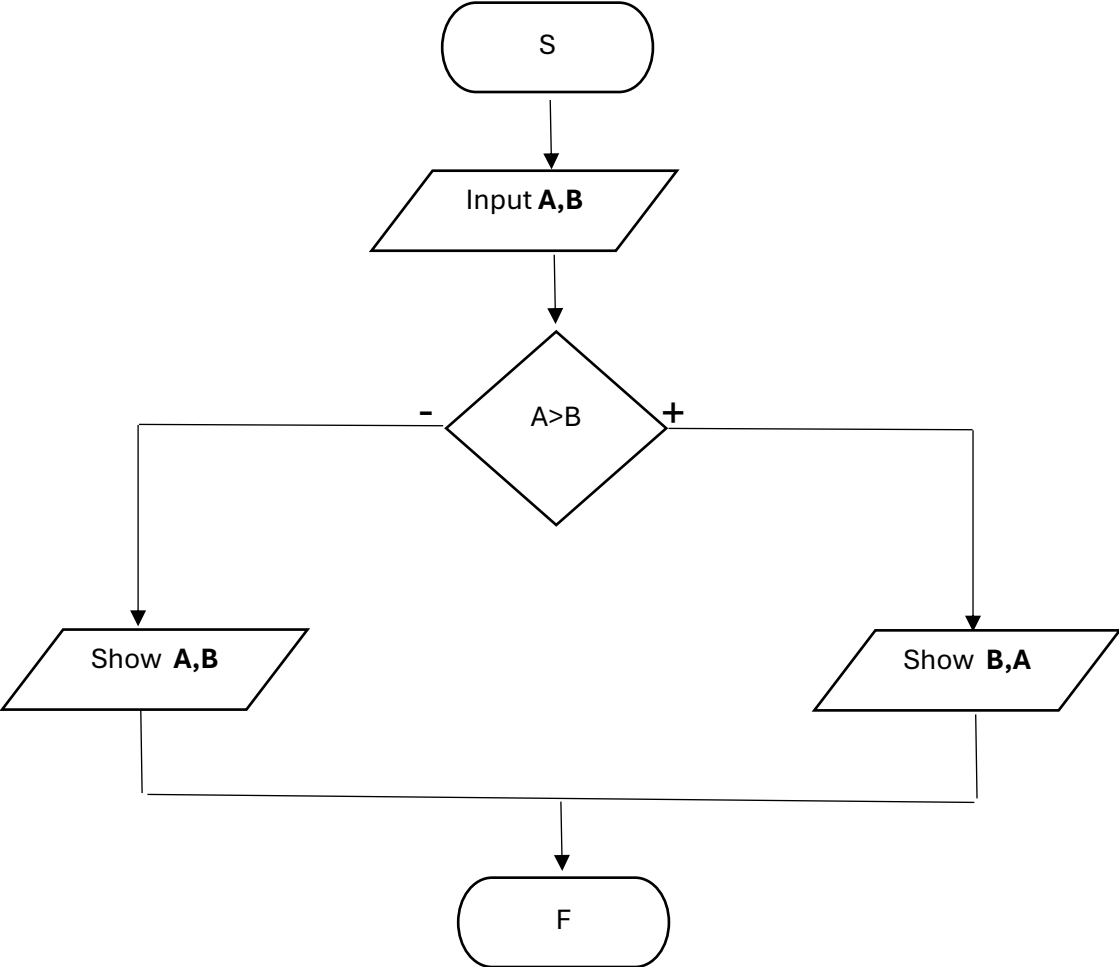


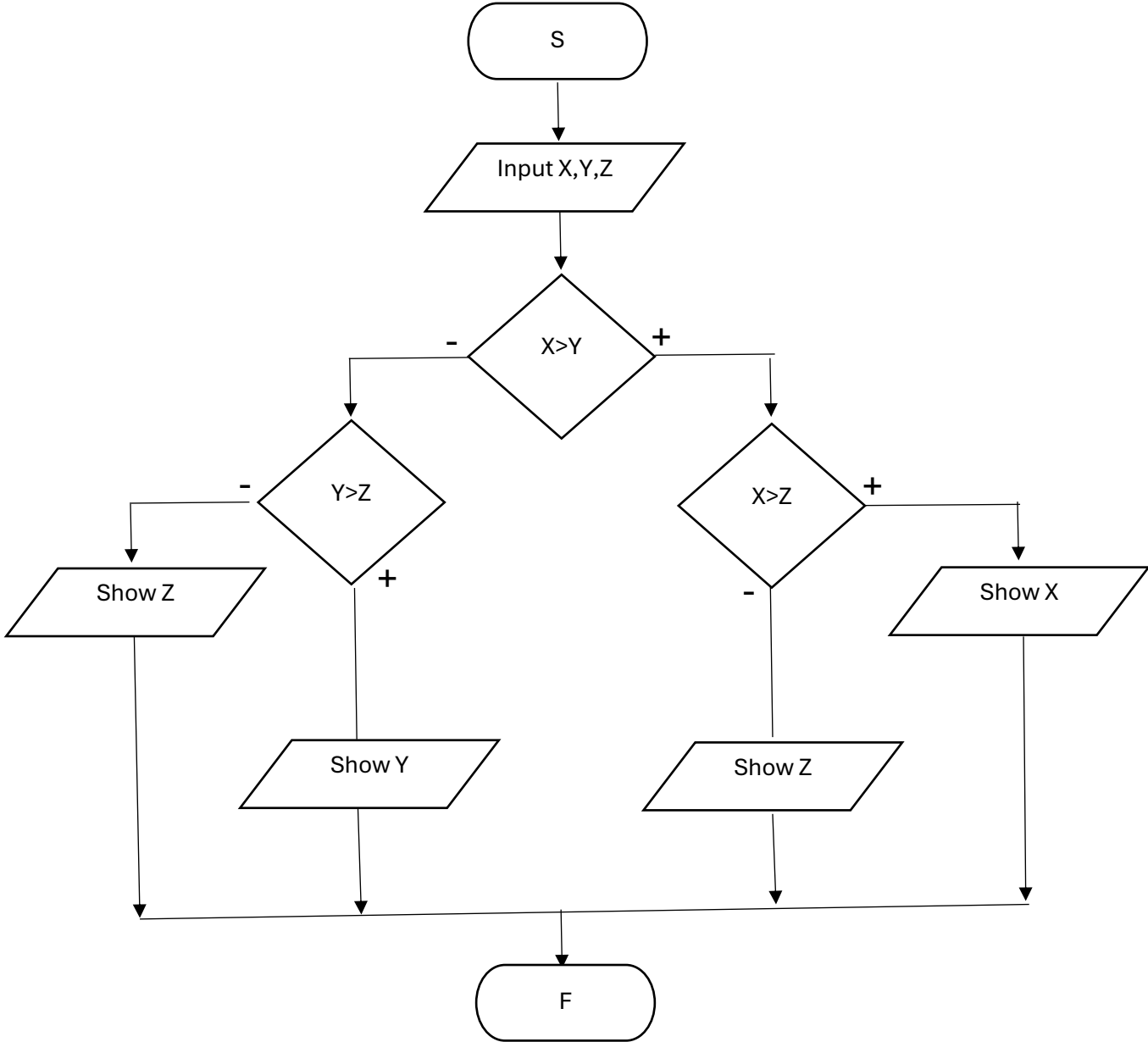
Use the flowchart to determine whether the number A is positive, negative, or equal to zero.



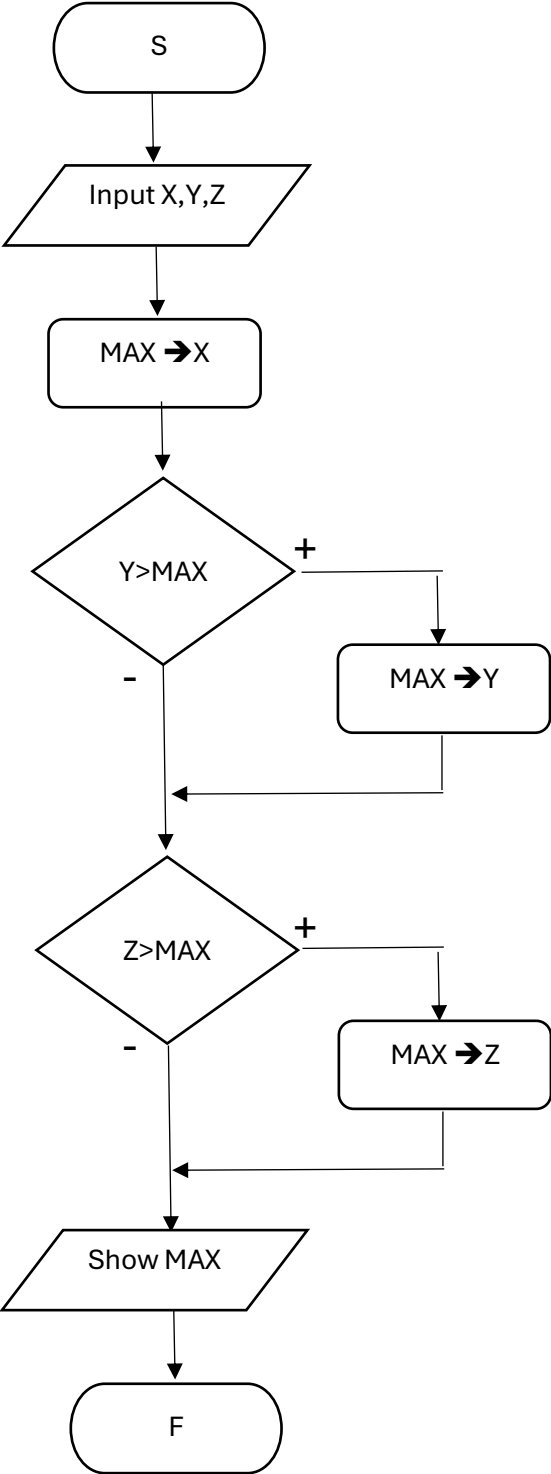
Read two numbers as input and then determine which number is smaller and which is larger. Finally, display them - first the smaller number and then the larger. Use variables A,B.



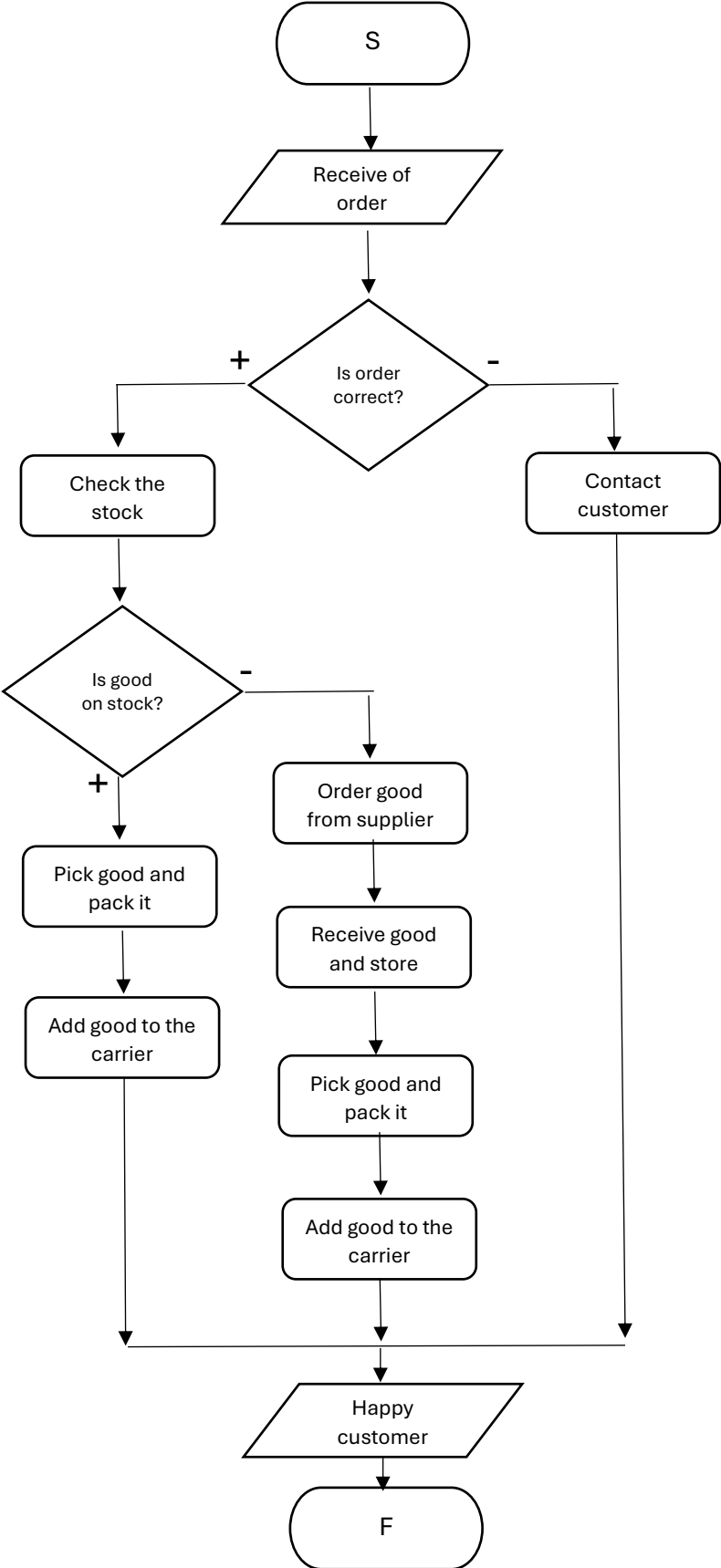
Find the largest number from three numbers X, Y, Z. First compare the first two numbers, then compare the larger of them with the third number.



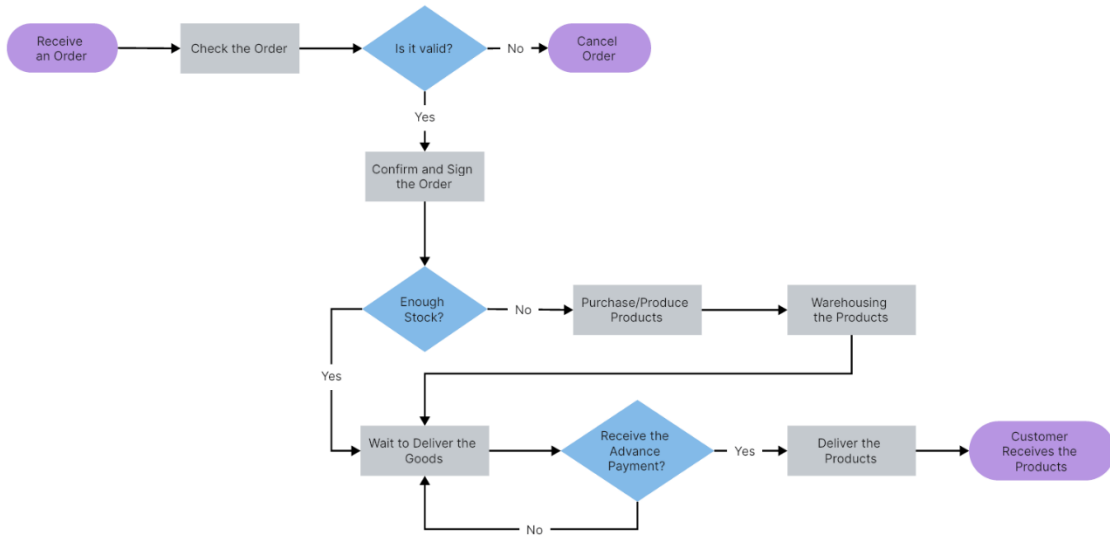
Solve the previous example using the Max help cell.



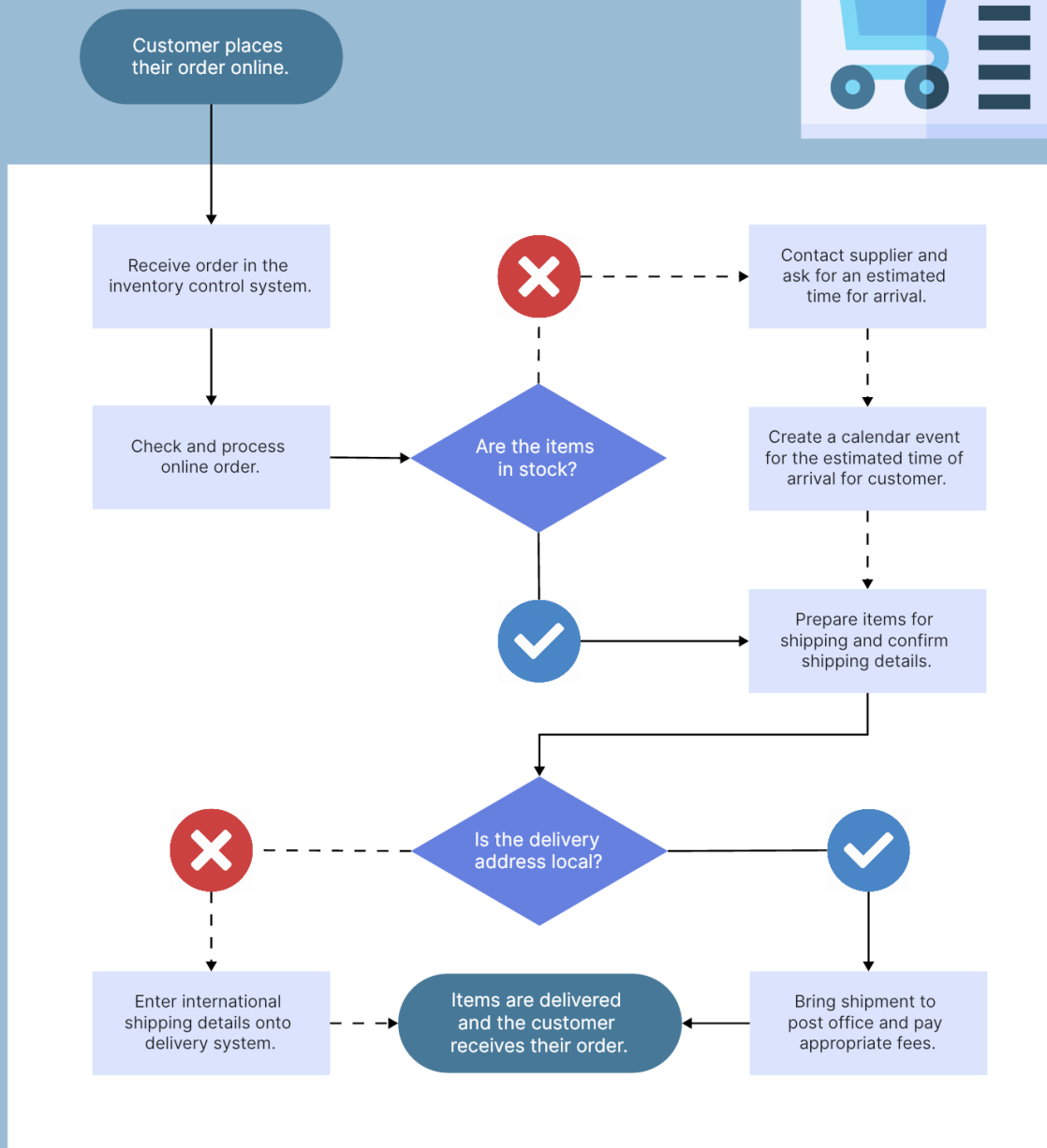
Create a FCH for the customer order process. The input value is text – „ Receive of order“. The first decision is whether the order is correct. If not, we will inform the customer. If yes, the first step in the process will be to pick up and pack the goods, and the second step will be to hand the goods over to the carrier. If not, in the first step we order the goods from the supplier, in the second step we receive and store them, in the third step we pick them up and pack them, and in the last step we move the goods to the carrier. The result will be a satisfied customer who receives their goods.



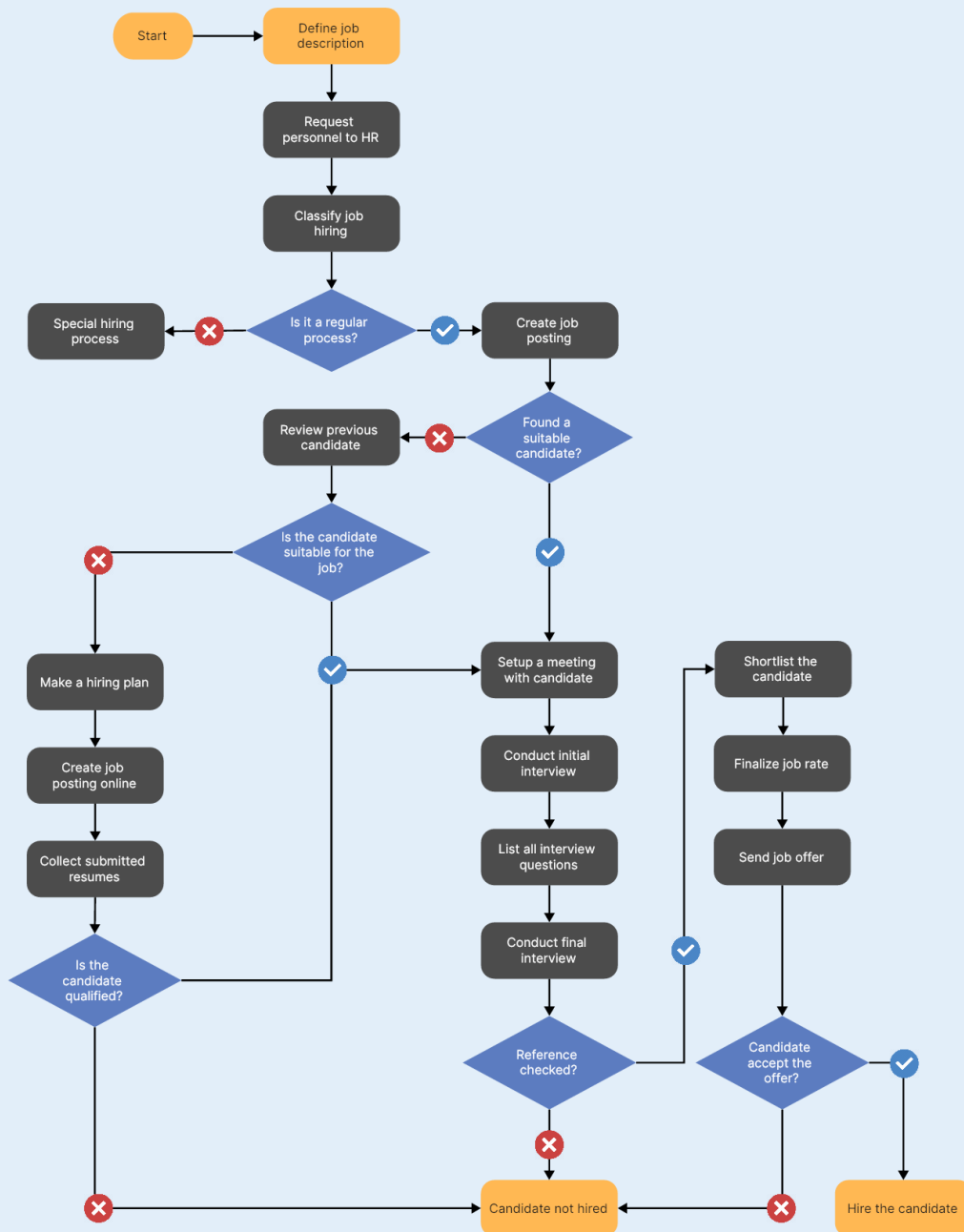
## Order Management



# Online Sales Procedure



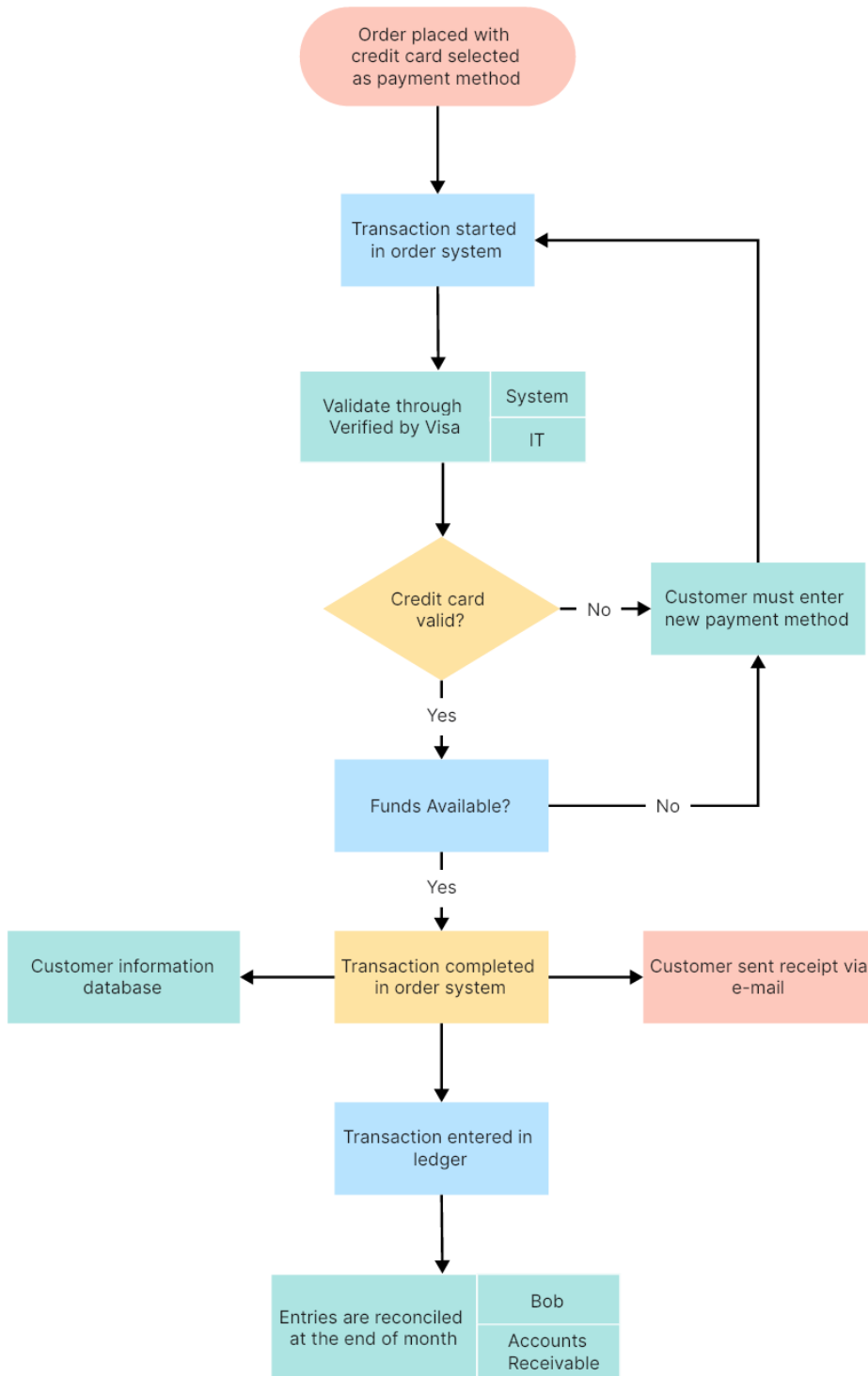
# Recruitment Process Flow



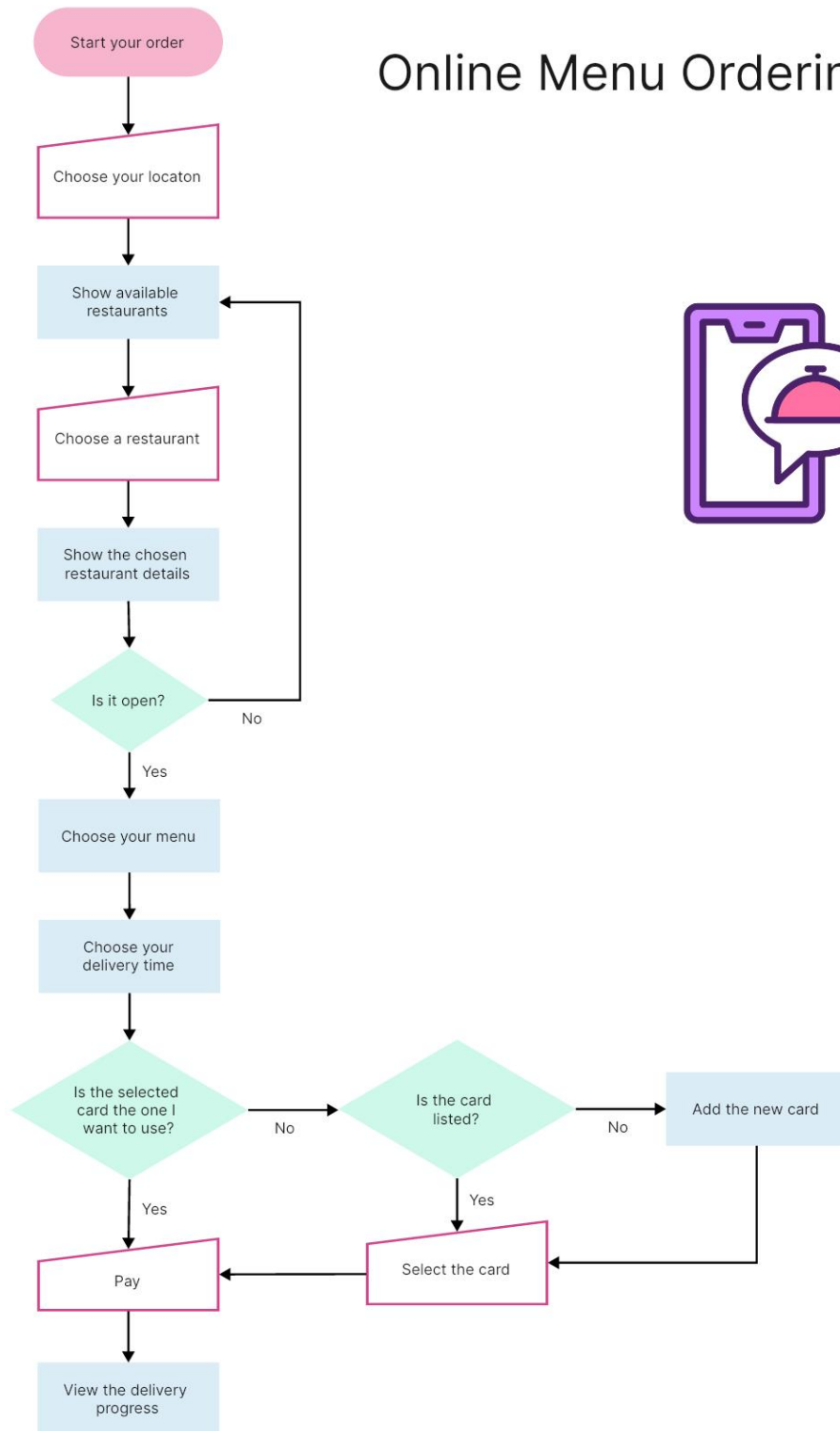


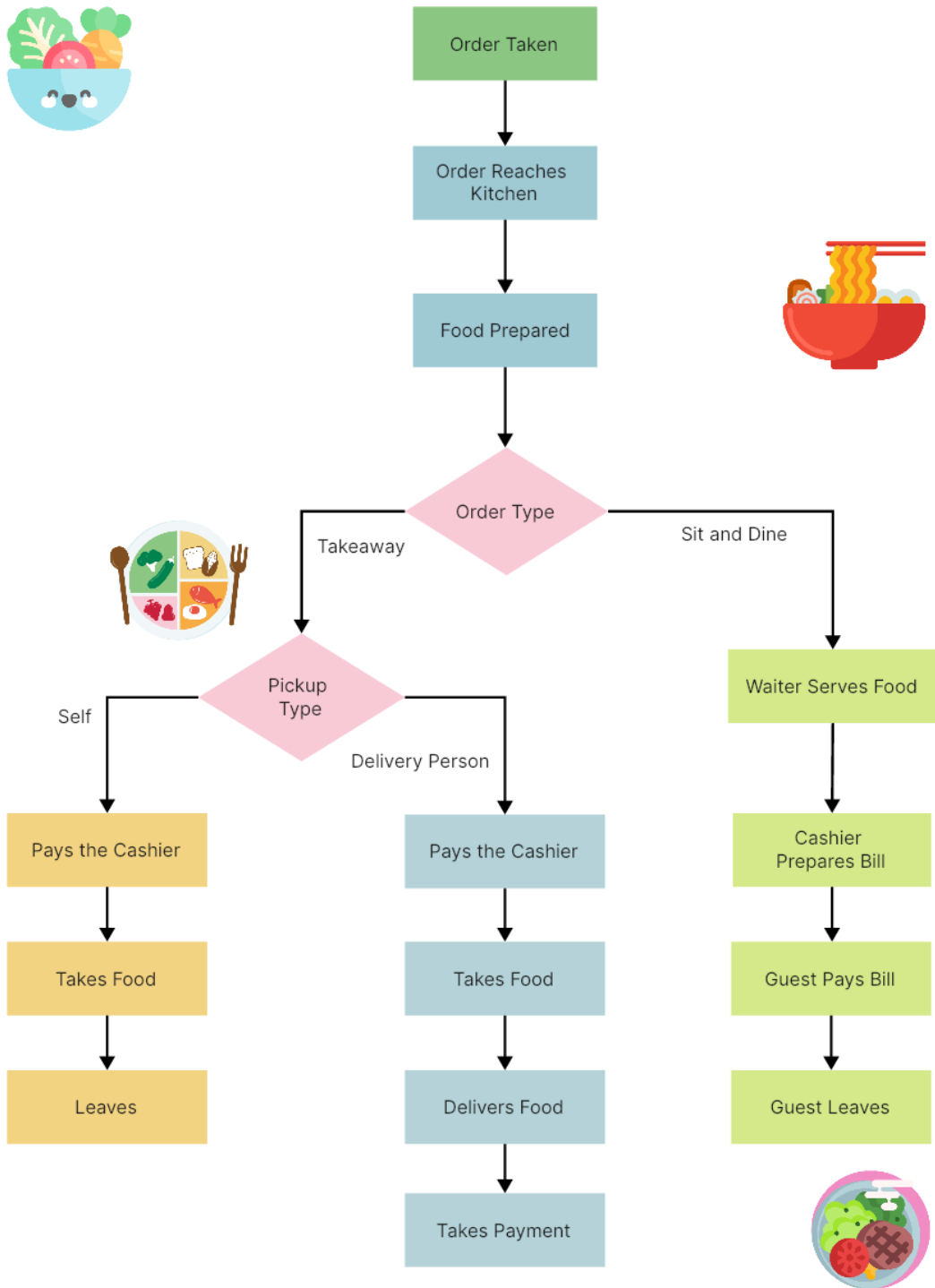


# Credit Card Order



# Online Menu Ordering





# Ordering A Book From

